

# THE BARRIERS TO ENGAGEMENT OF DIGITAL STOMA CARE EDUCATION

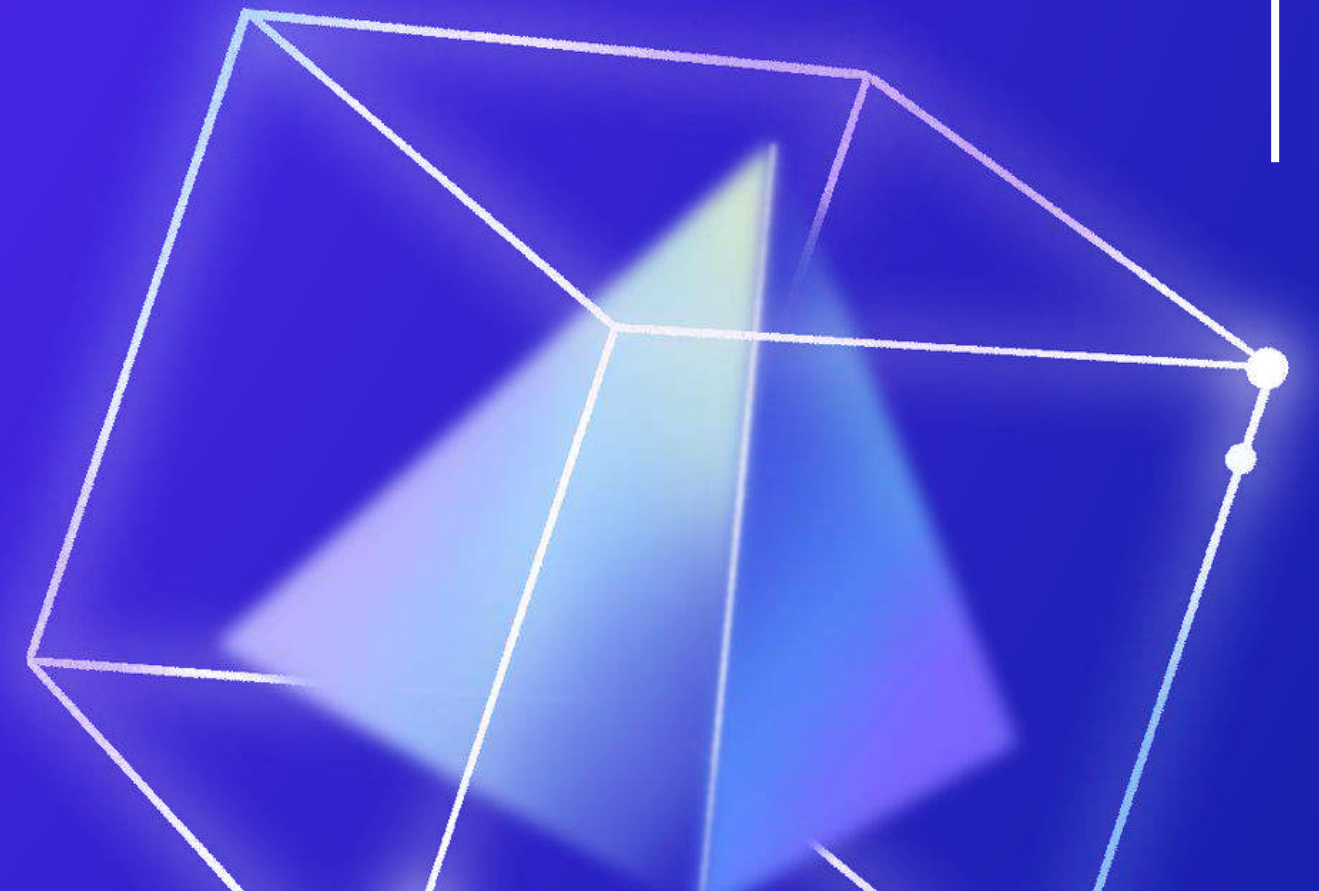
Sasha Drennan





# THE WOUNDCARE INTEGRATED LEARNING FRAMWORK

- The why
- How
- Methodology
- Identified issues
- Recomendations





# DIGITAL LEARNING

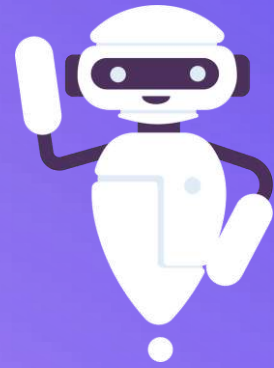


Distance learning has been in place since the 1960's

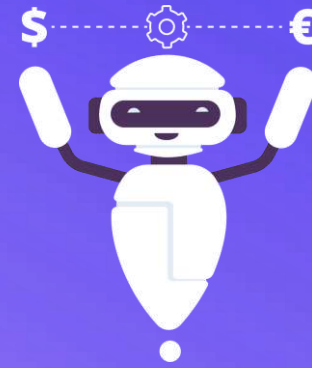
The advent of the pandemic made distance learning, digital learning an acceptable form of education

What changed?

# DIGITAL EQUITY



DIGITAL  
SOLUTIONS

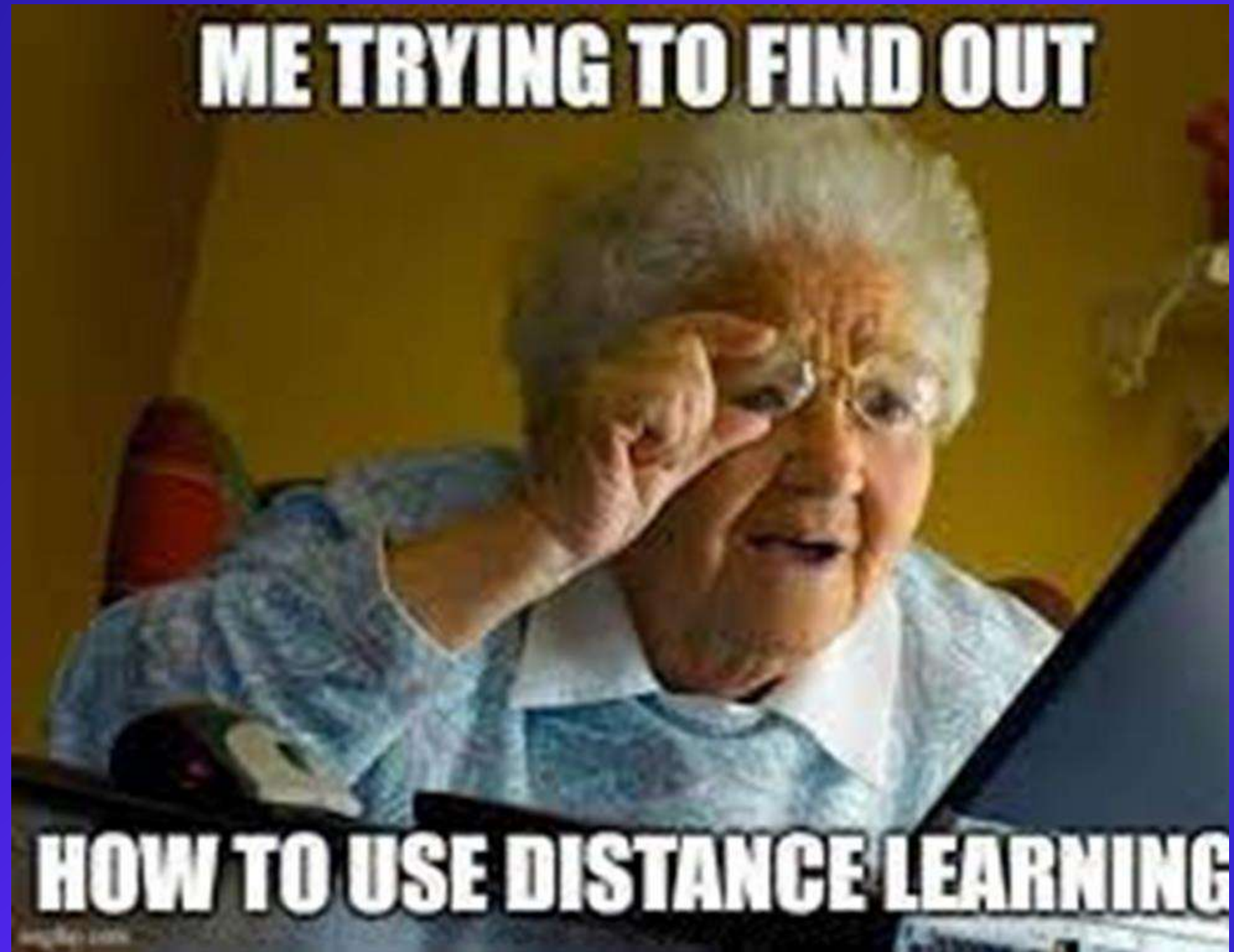


DIGITAL ACCESS  
INFRASTRUCTURE



DIGITAL  
HEALTH  
LITERACEY &  
WORKFORCE  
COMPETENCY







**ONLINE LEARNING**



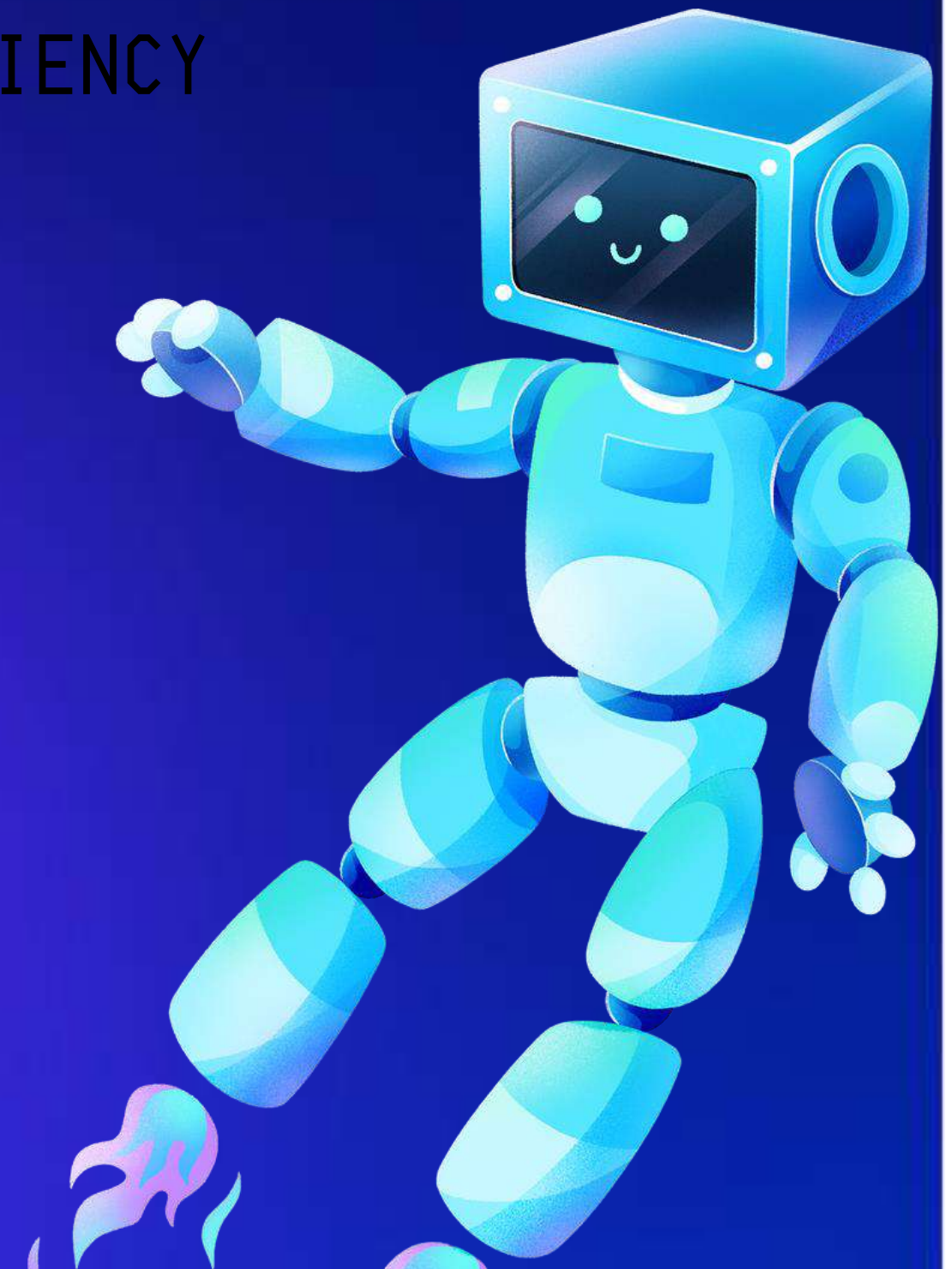
**WHAT!**



INCREASED EFFICIENCY

DELETION OF  
DIGITAL BIAS

UP TO DATE  
EDUCATION





The image is a composite graphic. On the left, there is a dark blue, semi-transparent image of a person's hand pointing towards the right. Below this, a robotic hand with a metallic, segmented appearance is visible. On the right side, there is a bright blue, stylized robotic hand. The background is white. The text 'DIGITAL PEDAGOGY' is written in a blue, blocky font at the top. Below it is a black ampersand '&'. The main title 'DIGITAL LEADERSHIP' is written in a large, red, blocky font across the center and right. The word 'DIGITAL' is on the top line, and 'LEADERSHIP' is on the bottom line.

DIGITAL PEDAGOGY

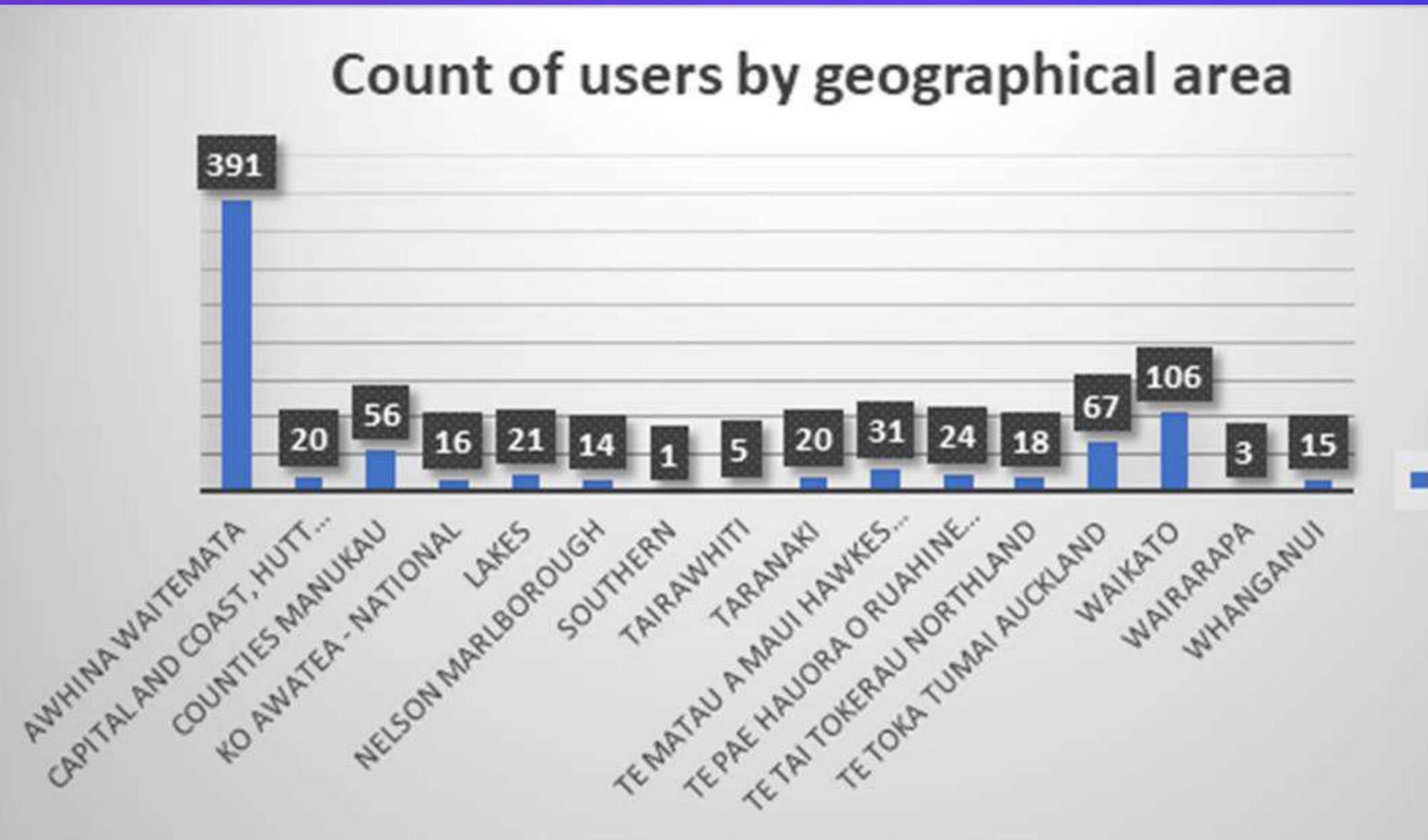
&

DIGITAL  
LEADERSHIP



01

### Count of users by geographical area



# Stoma Management

About this course:

Kia ora! The overall aim of this course is to enable nurses and caregivers to develop a better understanding of managing stoma cares for those with a colostomy, ileostomy or urostomy, to enhance the care provided to patients with stomas.

By the end of this course you will be able to:

- Demonstrate understanding of the relevant anatomy and physiology in patients with a colostomy, ileostomy and urostomy
- Demonstrate understanding of the holistic care needs of a client with a stoma
- Be able to effectively change a stoma bag
- Understand how to assess a stoma to identify potential complications

The assessments of this course are:

- Completion of learning modules and questions

The expectations of this course are that you will:

- Discuss your learning and its application with your manager and colleagues to enhance care provided to patients with a stoma

[Expand all](#)

## ^ Online Activities

 [The Digestive System & Colostomy](#)

 [Ileostomy](#)

 [Urinary System & Urostomy/Ileal Conduit](#)

 [Basic Stoma Care & Management](#)



Thankyou

